

A thick dark blue vertical bar runs down the left side of the page. A blue arrow points to the right from this bar, containing the date. In the bottom left corner, several thin, curved lines in dark blue and light grey sweep upwards and to the right.

23.6.2023

# AIG AI Manager

User Manual

Version: 1.2

Kai P. Kamjunke  
AIGTECH

## Content

|                                 |    |
|---------------------------------|----|
| AIG AI Manager .....            | 2  |
| Loading .....                   | 2  |
| Select Simulator .....          | 2  |
| Software/Database Update .....  | 2  |
| Online-Data collection .....    | 2  |
| Sim-Data collection .....       | 2  |
| OCI-Data collection .....       | 2  |
| Merge Data .....                | 2  |
| Flightplans .....               | 3  |
| Installed .....                 | 3  |
| Online .....                    | 4  |
| Duplicates .....                | 5  |
| Errors .....                    | 5  |
| Install (Local ZIP) .....       | 5  |
| Detail-View .....               | 5  |
| Aircraft .....                  | 6  |
| Installed .....                 | 6  |
| Errors .....                    | 7  |
| Not used .....                  | 7  |
| Airports .....                  | 8  |
| Overview .....                  | 8  |
| Missing .....                   | 9  |
| OCI – One Click Installer ..... | 9  |
| Settings .....                  | 10 |
| Copyright/Distribution .....    | 12 |

## AIG AI Manager

The AI Manager (AIM), developed by the AIG software team, is a powerful tool to manage your AI traffic. It provides a compact view of all useful information regarding your AI traffic and offers some management options like renaming and removing.

### Loading

During the startup-phase (loading) of AI Manager several different tasks are performed in the background to reduce loading times while using the application.

### Select Simulator

If you have multiple Simulators installed AIM will ask you on Startup for what Simulator, you want to start AIM.

### Software/Database Update

AIM will check for Software and Database updates on each startup. In case that a new software version has been uploaded AIM will download and install this one automatically for you. A restart of AIM is required after the update has been installed. Database updates are downloaded and installed without the need of a restart of AIM.

### Online-Data collection

AIM will connect to the AIG servers to get the latest information about published flightplans. The collected information will then be later used to “merge” them with the list of installed flightplans.

### Sim-Data collection

There are several steps in AIM to collect all installed airports, flightplans as well as SimObjects from the Sim. Depending on the size of your Sim-Setup this process might take some time. Paths to the different locations (P3D: Addons / MSFS: Packages) are collected from the Simulator-Settings.

Airport information will be cached for faster access on the next startup. On the initial startup you will be asked if you want to run in “Slow-Mode”, select this option if you do not have a high-end system. AIM will process fewer files at the same time resulting in far less RAM and CPU usage.

### OCI-Data collection

As a separate step OCI flightplans will be loaded after the Sim-Data has been loaded.

### Merge Data

In the end, all collected information are linked together for faster access during runtime.

## Flightplans

### Installed

|  | Airline                      | Season      | Status | Version | Developer | FS  | Source |                         |                        |
|--|------------------------------|-------------|--------|---------|-----------|-----|--------|-------------------------|------------------------|
|  | 21 Air                       | 2022 Winter | OK     | 3       | AIG       | FSX | AIGFP  | <a href="#">Details</a> | <a href="#">Remove</a> |
|  | 2Excel Aviation              | 2022 Summer | OK     | 2       | AIG       | FSX | AIGFP  | <a href="#">Details</a> | <a href="#">Remove</a> |
|  | 3M Science, Applied to Life™ | 2021 Summer | OK     | 1       | ESAI      | FSX | AIGFP  | <a href="#">Details</a> | <a href="#">Remove</a> |
|  | 4 Seasons                    | 2019 Summer | OK     | 2       | CHAI      | FSX | AIGFP  | <a href="#">Details</a> | <a href="#">Remove</a> |
|  | 40-Mile Air                  | 2019 Winter | OK     | 2       | AIG       | FSX | AIGFP  | <a href="#">Details</a> | <a href="#">Remove</a> |
|  | 5-Hour Energy                | 2022 Summer | OK     | 1       | ESAI      | FSX | AIGFP  | <a href="#">Details</a> | <a href="#">Remove</a> |
|  | 748 Air Services             | 2022 Winter | OK     | 2       | AIG       | FSX | AIGFP  | <a href="#">Details</a> | <a href="#">Remove</a> |
|  | 9 Air                        | 2021 Winter | OK     | 1       | ACAI      | FSX | AIGFP  | <a href="#">Details</a> | <a href="#">Remove</a> |
|  | AB InBev                     | 2020 Summer | OK     | 1       | ESAI      | FSX | AIGFP  | <a href="#">Details</a> | <a href="#">Remove</a> |
|  | Abbott Laboratories          | 2020 Winter | OK     | 1       | ESAI      | FSX | AIGFP  | <a href="#">Details</a> | <a href="#">Remove</a> |

Airline =  ☐ OCI-Only

Version: 1.2.0.2 (BETA) | Airports: 40704 | Flightplans: 1493 | SimObjects: 288 | FS-Version: MSFS2020 | Loaded FS-Data:

This page will display all installed flightplans in your current setup. Flightplans installed with OCI will have a Logo added to the entry.

**Airline:** The name of the Airline. For some files AIM might be unable to detect the airline name from the filename.

**Season:** The season this flightplan is based off.

**Status:** The status of the airline/flightplan. Normally this is “OK”. In case that a new version of the flightplan or a newer season has been uploaded it will switch to “Outdated”. If the airline is no longer operating or the flightplan is conflicting with a newer flightplan (operations have been merged for example) the airline will be listed as “Defunct”.

**Version:** Current fileversion of the flightplan. Versions starting with 0. are beta versions while full numbers are indicating a public release version.

**Developer:** The developer-code of the flightplan.

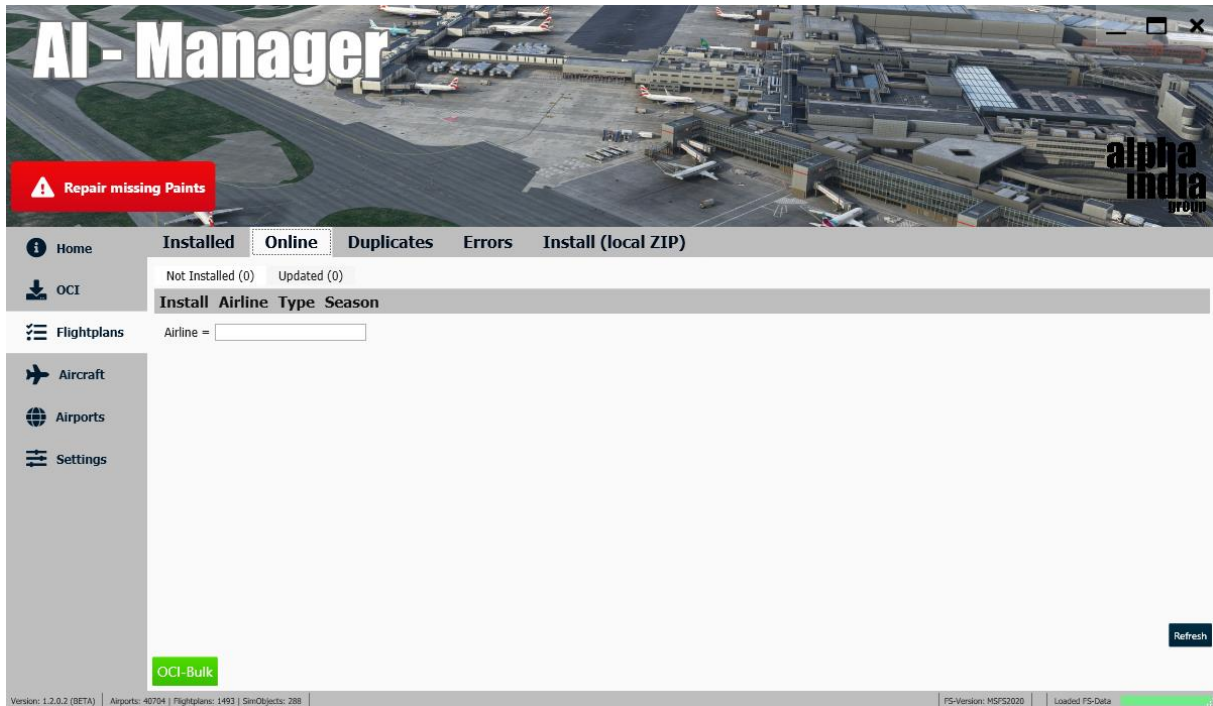
**FS:** The Day-Encoding format for the flightplan. (Not relevant for the normal user in most cases).

**Source:** Can be BGL or AIGFP. BGL based traffic will be injected by the Sim itself, while AIGFP traffic is injected by AIGTC.

**Details:** Will open a detailed overview of the flightplan

**Remove:** Remove the flightplan from the system.

## Online



There are two tabs on the page “Not Installed” and “Update”. The first one will list all flightplans available on the AIG servers that have not been matched to any installed airline. The update tab will list all airlines you have installed on your system that have newer versions on the AIG server.

**Airline:** Name of the airline

**Type:** Type of the flightplan.

- Airline – For commercial airlines
- GA\_Corporate – For corporate GA traffic
- GA\_Private – For private GA traffic
- Military – For military flightplans
- Government – For government flightplans
- Ambulance – For ambulance flightplans

**Season:** The season the flightplan is based off

**Install:** Use this button to install this single flightplan

**Download:** Downloads the ZIP for manual installation.

Use the textbox to filter for a specific airline by name.

### *Bulk install*

You can install/update multiple airlines at the same time with the bulk-option. Select multiple entries with Ctrl+A (ALL) or Ctrl+left mouse click in both tabs and click **OCI-Bulk**. A fully automated install process will start now. There can be some downloads that require you to download them manually if you want to skip those select the “skip manual download” checkbox. You can install the airlines later when you have time.

## Duplicates

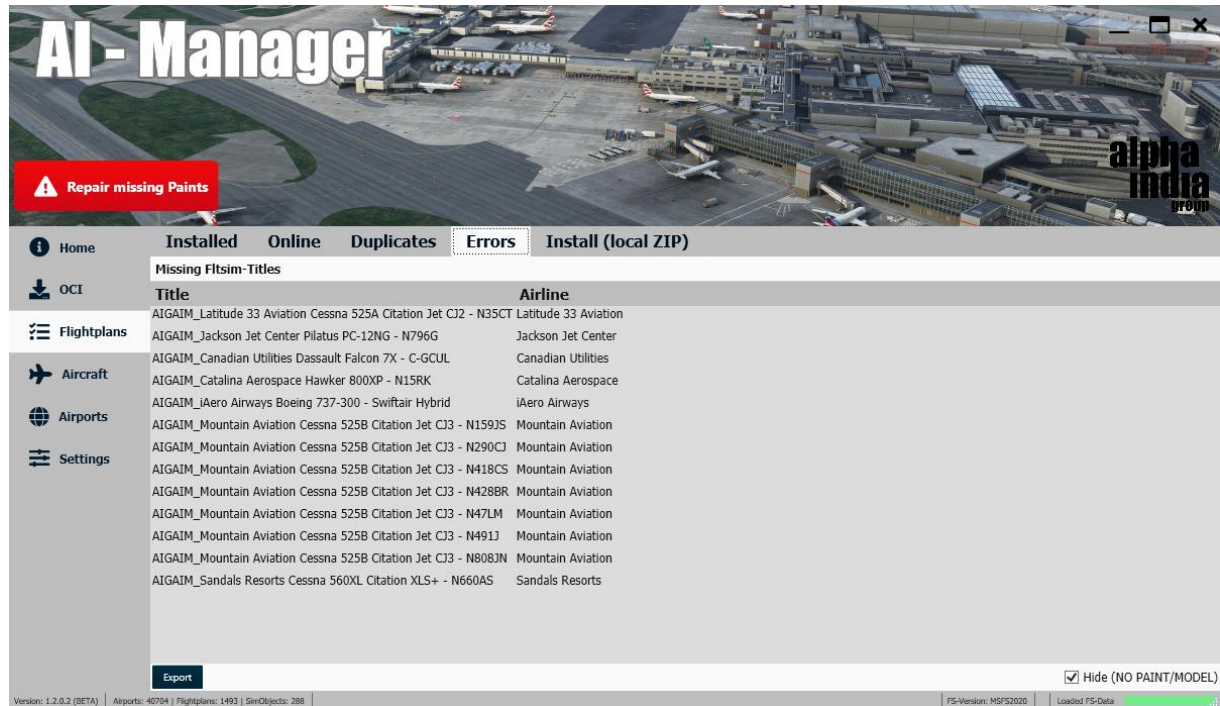
### Airlines

AIM will list possible duplicated installed flightplans here. AIM will check them based on the same name. Make sure to check for false-positive entries before removing one.

### Registration

AIM will list all duplicated registrations here as well as the flightplan they are in. In most cases you can ignore the errors here, since the airplane that causes this error is simply flying on a wet or dry lease for different airlines at different weeks.

## Errors



| Title  | Airline              |
|--|----------------------|
| AIGAIM_Latitude 33 Aviation Cessna 525A Citation Jet CJ2 - N35CT | Latitude 33 Aviation |
| AIGAIM_Jackson Jet Center Pilatus PC-12NG - N796G                | Jackson Jet Center   |
| AIGAIM_Canadian Utilities Dassault Falcon 7X - C-GCUL            | Canadian Utilities   |
| AIGAIM_Catalina Aerospace Hawker 800XP - N15RK                   | Catalina Aerospace   |
| AIGAIM_iAero Airways Boeing 737-300 - Swiftair Hybrid            | iAero Airways        |
| AIGAIM_Mountain Aviation Cessna 525B Citation Jet CJ3 - N159JS   | Mountain Aviation    |
| AIGAIM_Mountain Aviation Cessna 525B Citation Jet CJ3 - N290CJ   | Mountain Aviation    |
| AIGAIM_Mountain Aviation Cessna 525B Citation Jet CJ3 - N418CS   | Mountain Aviation    |
| AIGAIM_Mountain Aviation Cessna 525B Citation Jet CJ3 - N428BR   | Mountain Aviation    |
| AIGAIM_Mountain Aviation Cessna 525B Citation Jet CJ3 - N47LM    | Mountain Aviation    |
| AIGAIM_Mountain Aviation Cessna 525B Citation Jet CJ3 - N491J    | Mountain Aviation    |
| AIGAIM_Mountain Aviation Cessna 525B Citation Jet CJ3 - N808JN   | Mountain Aviation    |
| AIGAIM_Sandals Resorts Cessna 560XL Citation XLS+ - N660AS       | Sandals Resorts      |

The list will show all missing fltSIM-entries within your installed flightplans. Any airplane listed here will not be visible in the Simulator. OCI flightplans might contain additional information like (NO PAINT) or (NO MODEL), both “flags” indicate that there is no paint/model available at the moment for this fltSIM to be installed. You can hide them with the checkbox on the bottom-right.

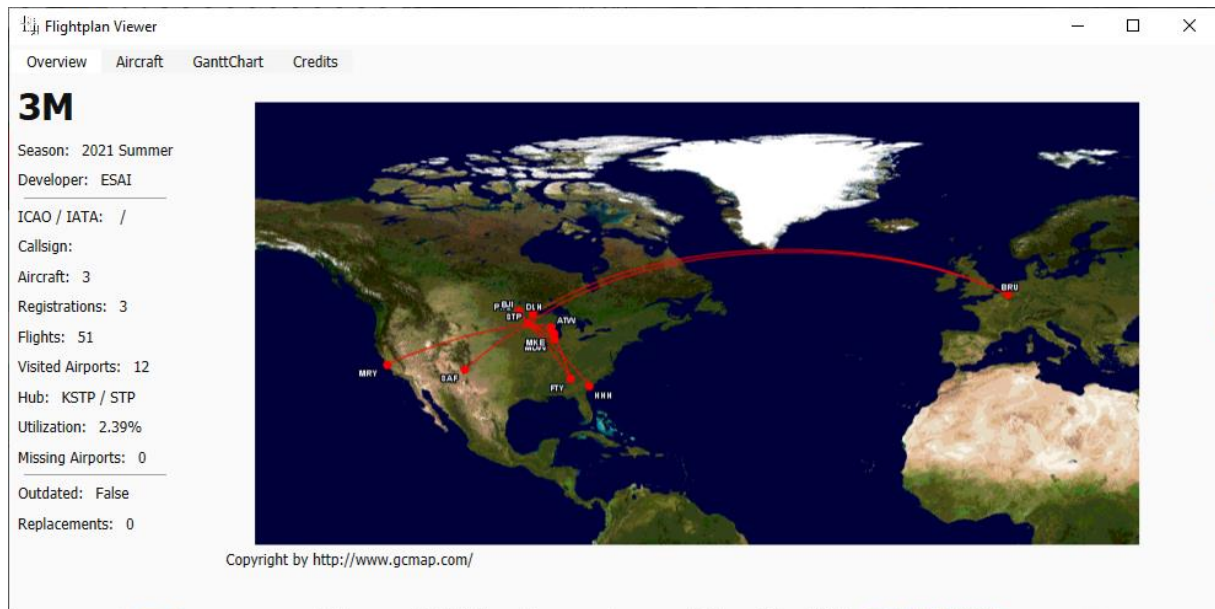
### Install (Local ZIP)

If you have downloaded a flightplan to your local system, you can install the ZIP file with this option.

### Detail-View

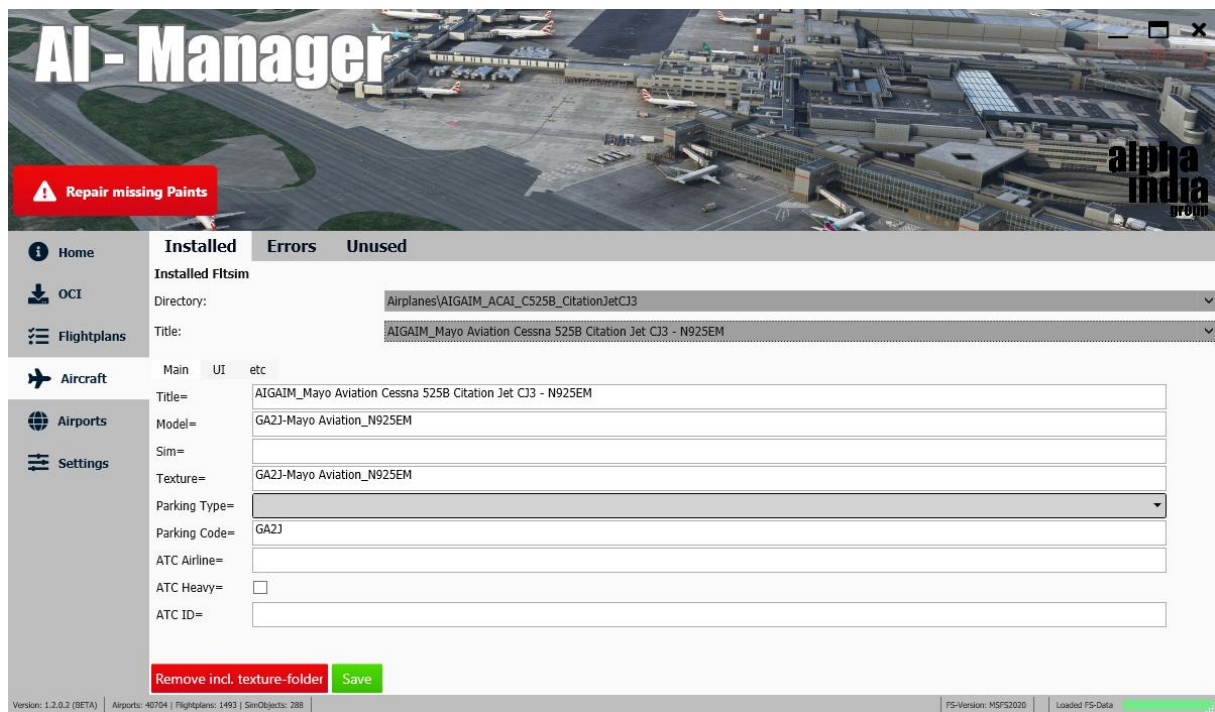
When clicked on the “Detail” button a new window will open and show you detailed information about the airline incl. a route-map, Gantt-Chart as well as the credits for the installed content (when installed with OCI)





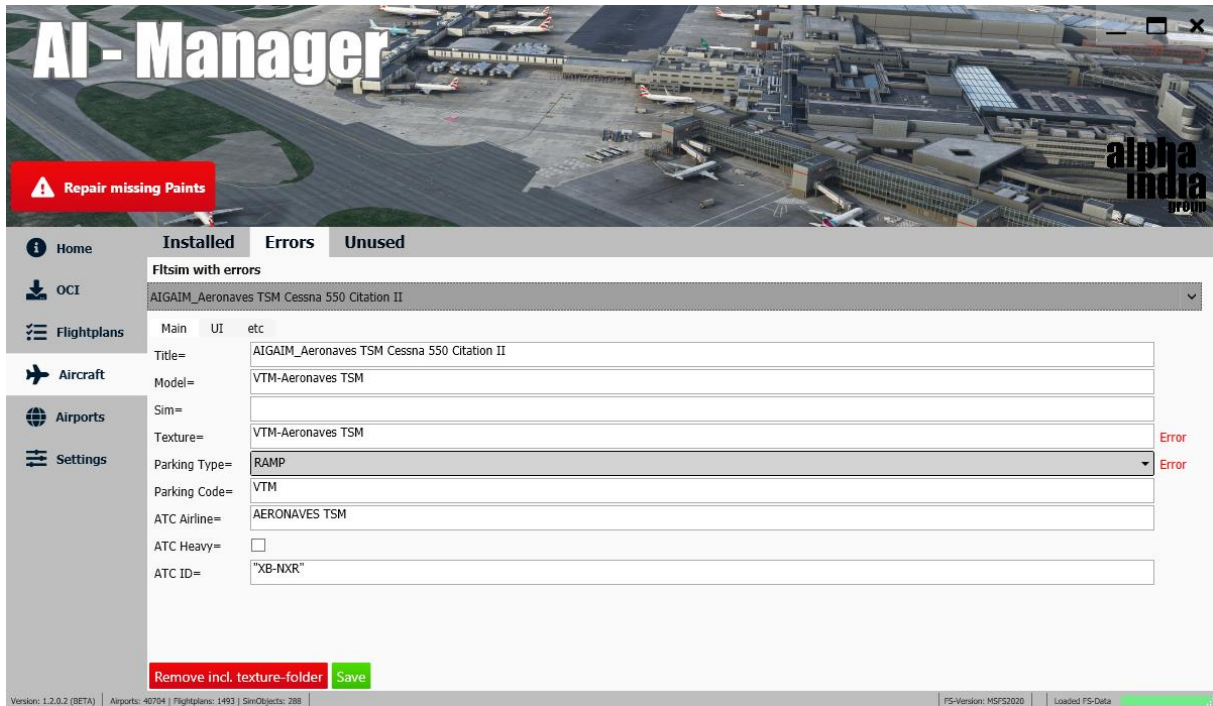
## Aircraft

### Installed



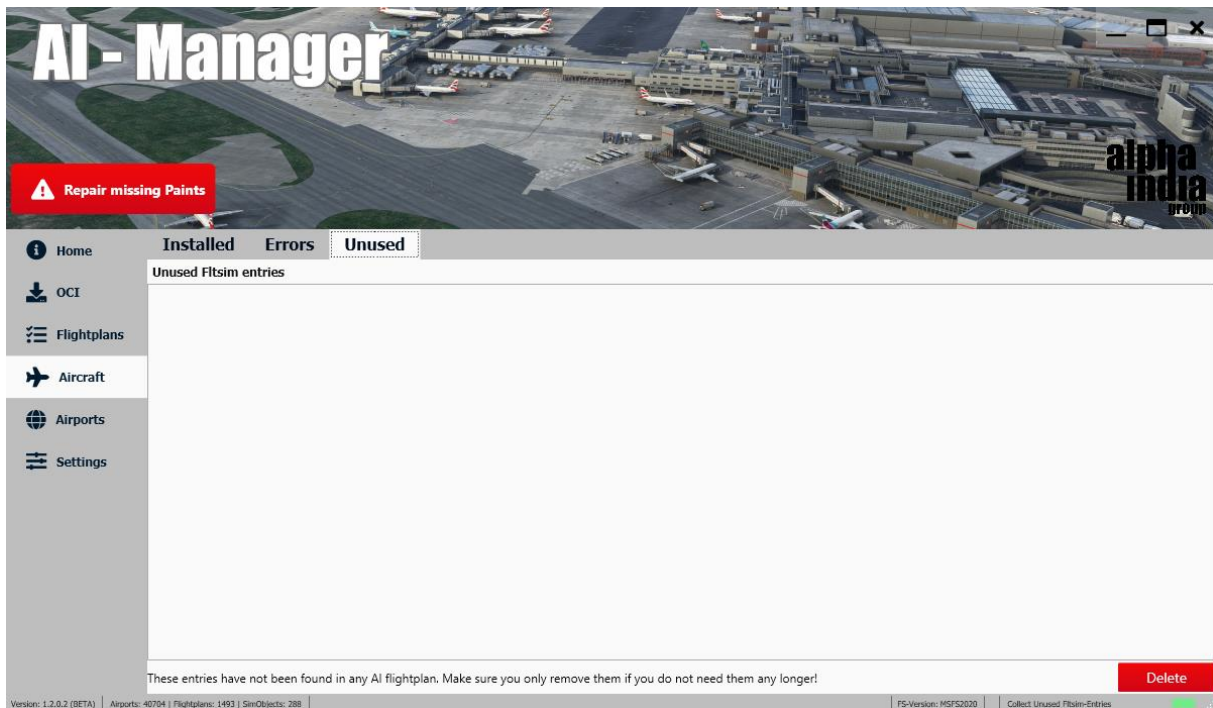
Using the dropdown boxes you can select each installed fltsim-entry within the setup. Make changes in the boxes and click “save”.

## Errors



In case of a potential error with an installed fltsim, AIM will list the fltsim-entry in the dropdown-box. Select it there and AIM will highlight the potential error. At the moment it will scan for missing AIR files, missing model-settings as well as issues with the textures.

## Not used



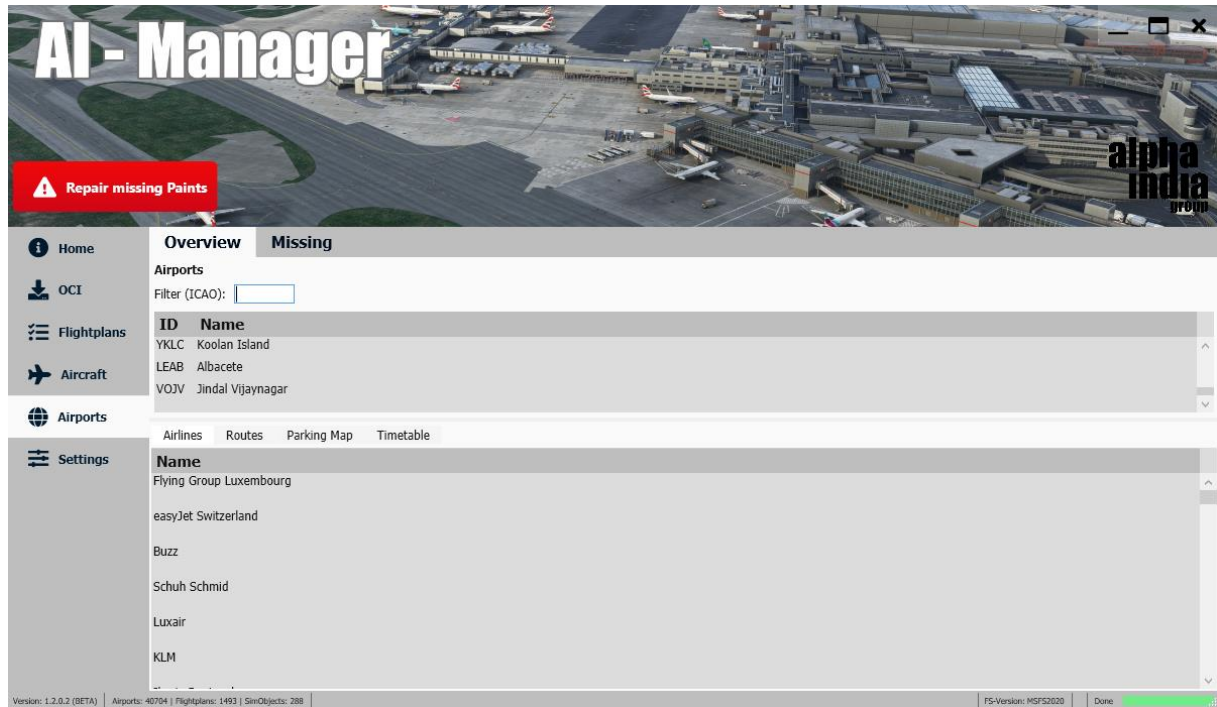
AIM will list here all fltsim-entries that have not been assigned to any installed flightplans.

**IMPORTANT:** User-Airplanes will be listed here as well! Make sure you do not remove them by accident.



## Airports

### Overview



In the top list all airports that are installed or are used by a flightplan are listed. When selecting an entry there the detail view in the bottom will be loaded.

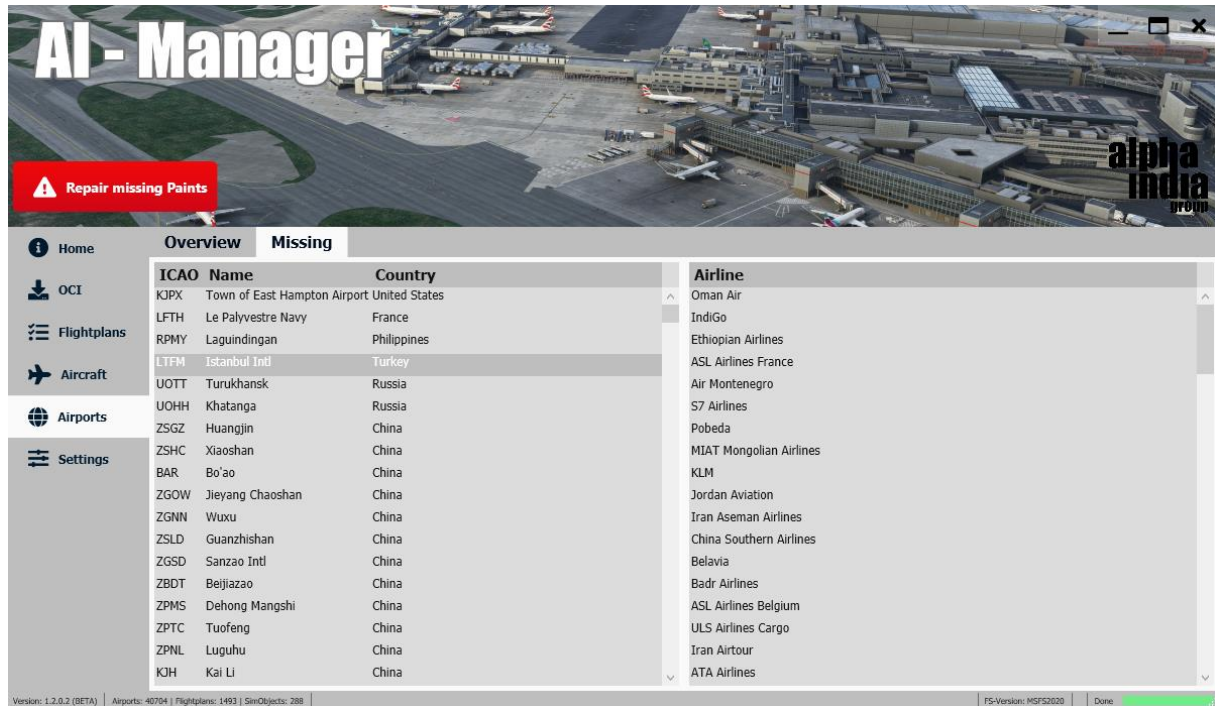
**Airlines:** Lists all flightplans flying to the selected airport

**Routes:** Displays a map with all routes to/from this airport.

**Parking Map:** Opens a map with added parking spots for the airport.

**Timetable:** Today's timetable for the airport based on the flightplans installed on the system.

## Missing



**AI-Manager**

Repair missing Paints

Home Overview **Missing**

OCI Flightplans Aircraft Airports Settings

| ICAO | Name                         | Country       |
|------|------------------------------|---------------|
| KJPX | Town of East Hampton Airport | United States |
| LFTH | Le Palyvestre Navy           | France        |
| RPMY | Laguindingan                 | Philippines   |
| LTFM | Istanbul Intl                | Turkey        |
| UOTT | Turukhansk                   | Russia        |
| UOHH | Khatanga                     | Russia        |
| ZSGZ | Huangjin                     | China         |
| ZSHC | Xiaoshan                     | China         |
| BAR  | Bo'ao                        | China         |
| ZGOW | Jieyang Chaoshan             | China         |
| ZGNN | Wuxu                         | China         |
| ZSLD | Guangzhishan                 | China         |
| ZGSD | Sanzao Intl                  | China         |
| ZBDT | Beijazao                     | China         |
| ZPMS | Dehong Mangshi               | China         |
| ZPTC | Tuofeng                      | China         |
| ZPNL | Luguhu                       | China         |
| KJH  | Kai Li                       | China         |

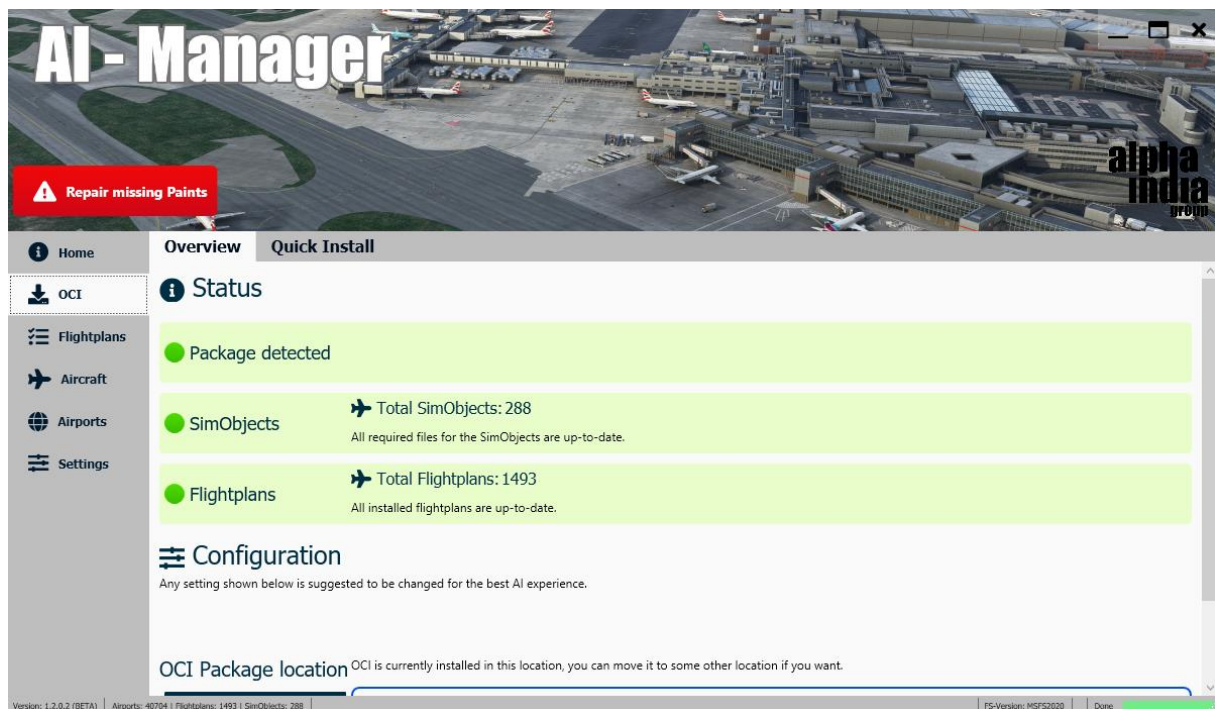
| Airline                 |
|-------------------------|
| Oman Air                |
| IndiGo                  |
| Ethiopian Airlines      |
| ASL Airlines France     |
| Air Montenegro          |
| S7 Airlines             |
| Pobeda                  |
| MIAT Mongolian Airlines |
| KLM                     |
| Jordan Aviation         |
| Iran Aseman Airlines    |
| China Southern Airlines |
| Belavia                 |
| Badr Airlines           |
| ASL Airlines Belgium    |
| ULS Airlines Cargo      |
| Iran Airtour            |
| ATA Airlines            |

Version: 1.2.0.2 (BETA) | Airports: 40704 | Flightplans: 1493 | SimObjects: 288 | FS-Version: MSFS2020 | Done

In case that a flightplan is using an airport that is not found in the Sim-Data on startup it will be listed here. If you have airports listed here we suggest you try to find an addon/mod that might add this airport to the simulator.

## OCI – One Click Installer

### Overview



**AI-Manager**

Repair missing Paints

Home Overview **Quick Install**

OCI Flightplans Aircraft Airports Settings

**Status**

- Package detected
- SimObjects Total SimObjects: 288  
All required files for the SimObjects are up-to-date.
- Flightplans Total Flightplans: 1493  
All installed flightplans are up-to-date.

**Configuration**

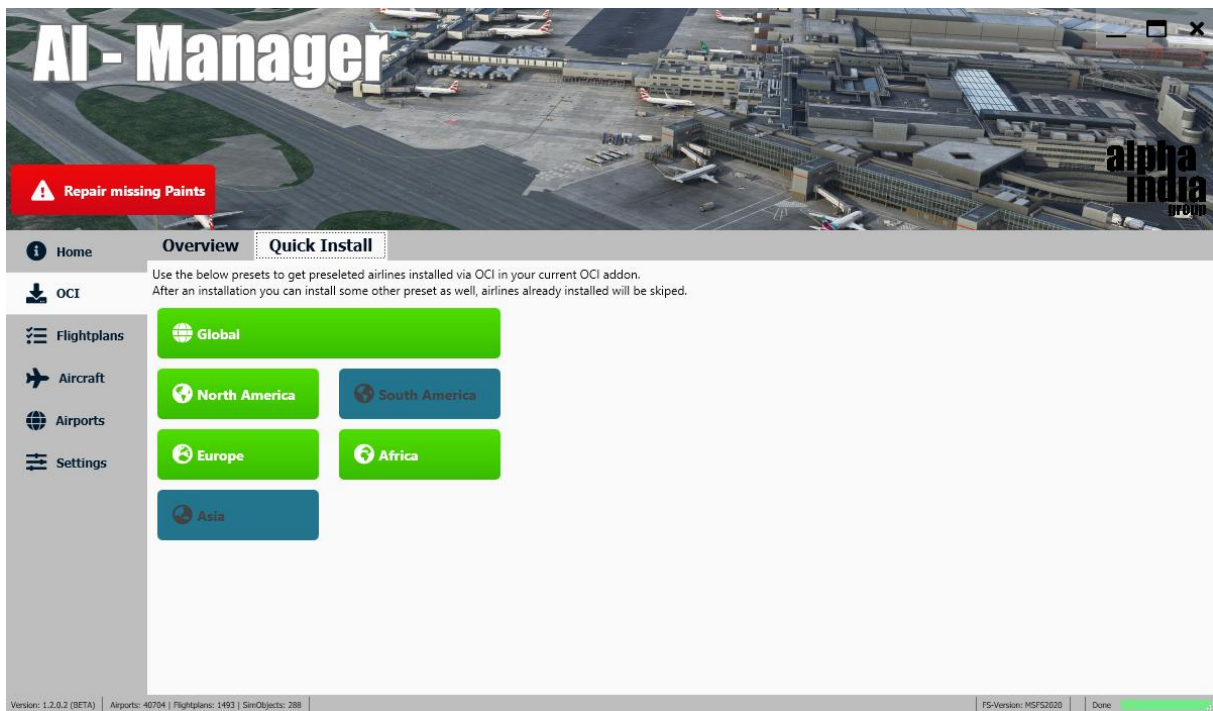
Any setting shown below is suggested to be changed for the best AI experience.

OCI Package location OCI is currently installed in this location, you can move it to some other location if you want.

Version: 1.2.0.2 (BETA) | Airports: 40704 | Flightplans: 1493 | SimObjects: 288 | FS-Version: MSFS2020 | Done

Here you will get a short overview about your current OCI addon-status and the ability to execute a few basic operations.

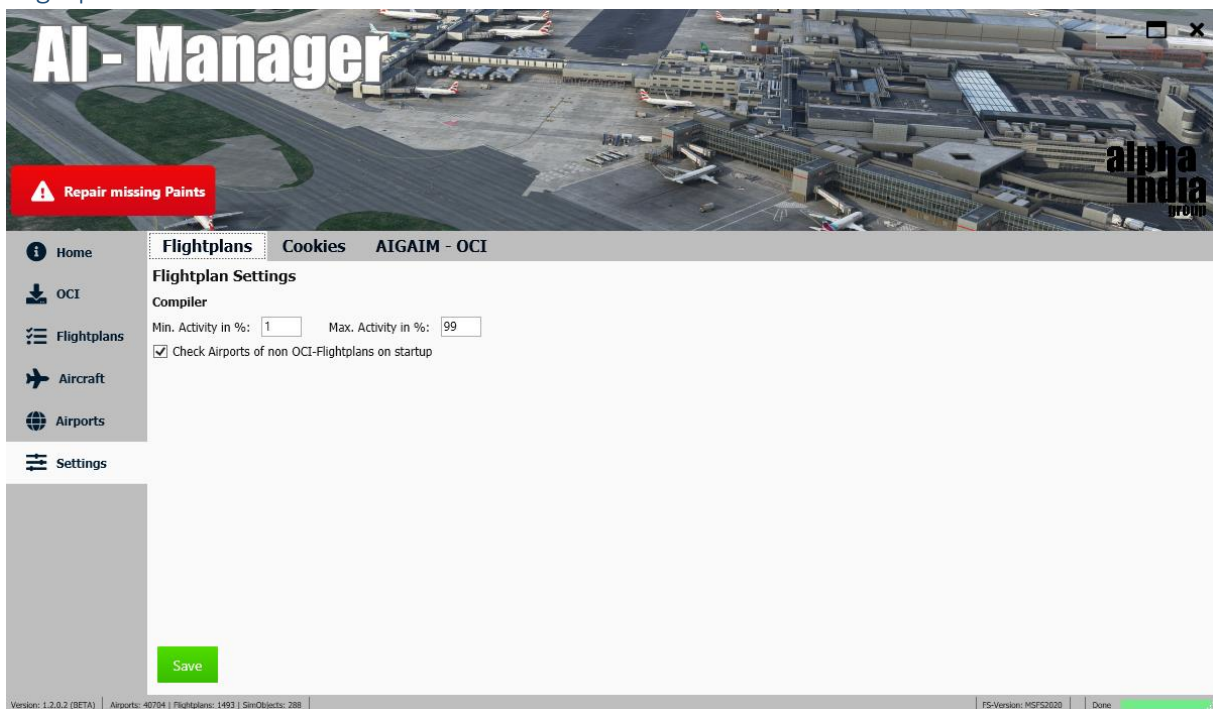
## Quick Install



The Quick Install Options allows you to install a predefined set of airlines for a specific region, we suggest to start with the global preset as it gives you a base setup of airlines around the world.

## Settings

### Flightplans



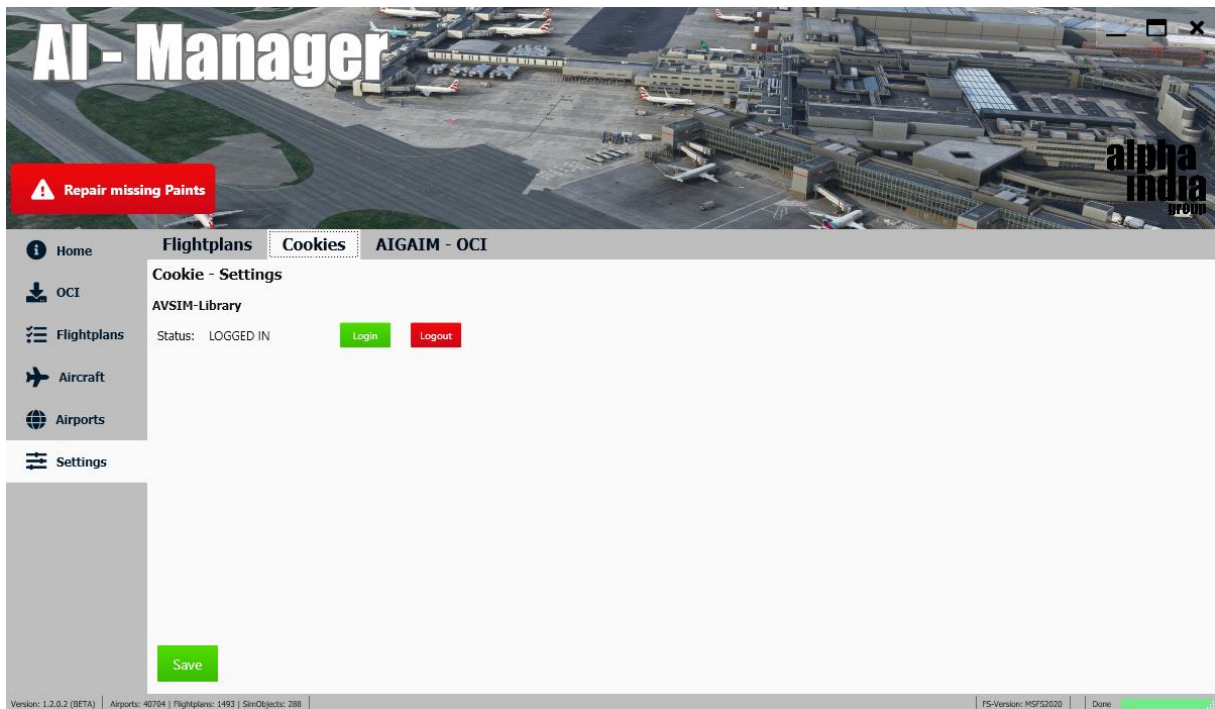
Use the % settings to define the level of the AI activity for BGL based traffic. (P3D only)

If you enable **Check Airports of non OCI-flightplans on startup** AIM will check the installed traffic files for outdated airport information and recompile them with the new airports.



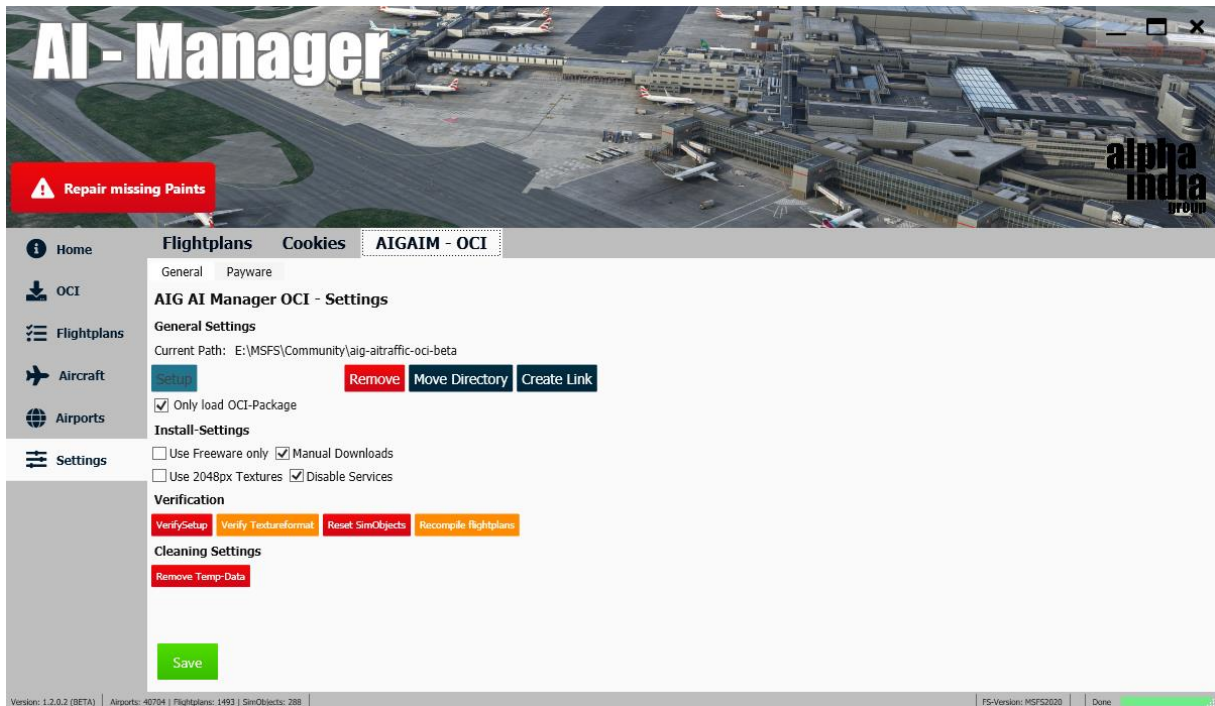
If you want to use AIGFP based traffic enable the Checkbox and add the AIGTC directory (P3D only) – MSFS users always get AIGFP files when using OCI.

## Cookies



During the OCI process there might be files hosted on the AVSIM – Library server. To allow an automatic download you need to login here.

## AIGAIM - OCI



**Setup:** Start the OCI setup process

**Remove:** Removes the installed OCI addon

**Move Directory:** Allows you to move the whole OCI directory to a new path

**Create Link:** Creates a new junction link in the community directory (MSFS only)

**Only load OCI-Package:** If enabled AIM will only load the OCI package on startup, this will have a direct impact on the loading times of AIM. (MSFS only) – Use this only when you have no other traffic files installed that you want to manage with AIM.

**Use Freeware only:** When enabled AIM will never ask for any payware models during the installation.

**Use ATC file:** AIM can install a custom ATC file for OCI if enabled (P3D only)

**Use 2048px Textures:** AIM will downsize all bigger textures to 2048px to save disk space.

**Use FSim+ Beta:** When enabled you can use the FSim+ Beta sound pack for MSFS and OCI will not override the soundai.cfg files in the OCI simobjects each time. (MSFS only)

**Disable Services:** Disables all (excl. Pushback) services for OCI SimObjects (MSFS only). We suggest to use this feature in combination with the new Airport Service feature in AIGTC 0.6 and newer).

**Remove Temp-Data:** Cleans the temp directory on C-Drive

**Verify Setup:** Check your current setup for issues and repairs them when possible.

**Verify Textureformat:** Checks the installed texture to match the texture settings.

**Reset SimObjects:** Will set the version of all SimObjects to 0, and force a model update on next verify.

**Recompile flightplans:** Resaves all flightplans.

## Copyright/Distribution

The Copyright for the Software remains by the developers of Alpha India Group. Uploading the software anywhere else then AIG own website is not allowed.

The copyright of the installed files (models, repaints, flightplans, callsigns, scenery) remains by the individual author. You are not allowed to modify and/or reupload it without the written permission of the original developer. Further information are provided by the original developer in the downloaded file.